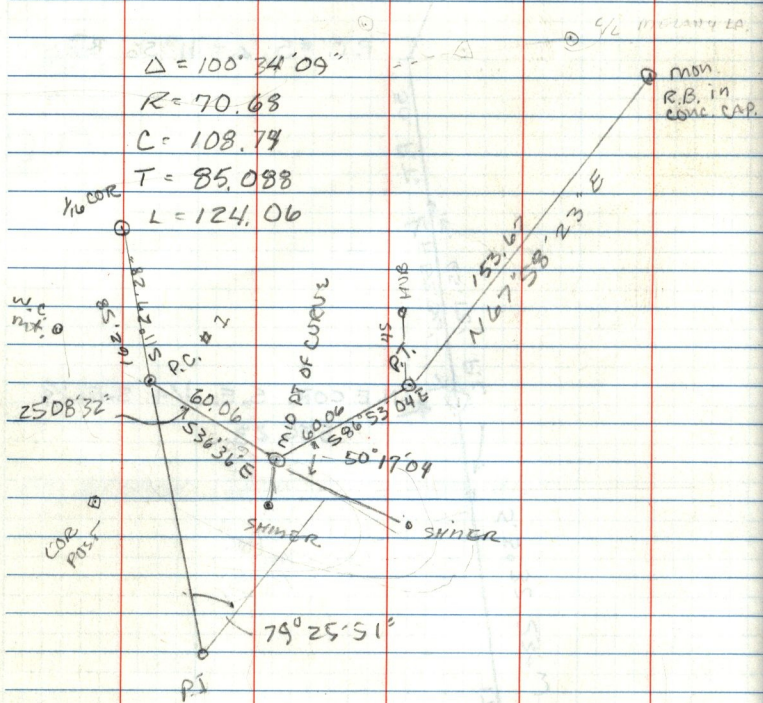


OSMAND DR. CURVE 20

14 SEPT.  
J. CARTER  
C. B. PARKER



P.C. # 1 55.3' W.C. TO 1/16 COR, - SOUTH OF SOUTH DR.  
70.90 SHINER ON LOG POST

MID PT 27.5 FROM SHINER ON POST  
58.40 FROM SHINER ON POST

HYDRANT, 38.4 TO P.T. - 34' TO MID PT. OF CURVE